



Keep
it
Clean

Product catalog

foam, spray, fog & mist
central systems

drain foaming

doorway & footwear sanitation

chemical storage & management



LIGHTHOUSE
Life Sciences



Portable pre-mix units

- powered by compressed air
- draws from pre-mixed solution
- see-through tank
- front facing drain
- anti-kink hose protection
- in-line strainer to protect pump
- designed for easy maintenance – modular hinged back plate, quick-change pump
- customization options –
 - pump seal material for compatibility
 - color coding – hose +/- or lid
 - foam wand style – zero degree tip or fan tip



5 gallon
(18.9 liter)

FI-5N – FOAM
SP-5N – SPRAY
GI-5N – GEL



10 gallon
(37.6 liter)

FI-10N – FOAM
SP-10N – SPRAY
GI-10N – GEL



20 gallon
(75.7 liter)

FI-20N – FOAM
SP-20N – SPRAY
GI-20N – GEL



25 gallon
(94.6 liter)

FI-25N – FOAM
SP-25N – SPRAY
GI-25N – GEL



30 gallon
(113.6 liter)

FI-30N – FOAM
SP-30N – SPRAY
GI-30N – GEL



50 gallon
(189.3 liter)

FI-50N – FOAM
SP-50N – SPRAY
GI-50N – GEL



Equipment that makes your job easier.

From the front facing drain and built in hose storage, to the quick change pump and modular hinged back plate – our innovative portable units are designed to be easy to use and maintain.

Customize it

Build the best unit for you with options like pump seals and color coding. Foam, spray, and gel units are available in sizes from 5 to 50 gallons.



Available with Smart Technology

Our unique control system never stores pressure anywhere in the unit.



Accurate, automatic dilution on the fly.

Our portable concentrate unit dilutes on the fly – no manual mixing required. That means labor savings, no mixing errors, and less chance of exposure to concentrated chemicals.

Available in foam and spray versions, with single or two product pick up options. Also available in a dual function (FOAM + SPRAY) version so you can clean and sanitize with one unit.

Portable concentrate units

- labor & time savings – fewer trips to the chem room for refills
- easily monitor water consumption
- powered by compressed air
- dilutes at ratios of 14:1 to 320:1
- onboard water tank – 15 gallon (56.8 liter) capacity
- holds two FOAM-iT reusable chemical jugs, one standard five gallon bucket, or other containers (containers not included)
- see-through tank with front facing drain
- anti-kink hose protection
- designed for easy maintenance – modular hinged back plate, quick-change pump
- customization options –
 - pump seal material for compatibility
 - color coding – hose +/- lid
 - foam wand style – zero degree tip or fan tip
 - single or dual product pick up

FI-CN-15N – FOAM (pictured with two of our chemical jugs)

SP-CN-15N – SPRAY

FISP-CN-15N – dual function FOAM + SPRAY



Our heavy duty [chemical jugs](#) are a great way to supply any concentrate unit – see p. 22-23.



Not all concentrate units are created equal.

Water-driven concentrate units allow dilution rates to fluctuate as the incoming water pressure changes. Our concentrate units are different. We use a pump inside the unit to keep dilution rates consistent, no matter what's happening with the water pressure.

Don't let your chemistry take the blame for problems that are caused by imprecise equipment. When consistent performance counts, choose a concentrate unit that can deliver.



Wall mounted concentrate units 🇺🇸

- pump provides reliable dilution, regardless of water pressure fluctuations
- powered by compressed air
- dilutes at ratios of 14:1 to 320:1
- requires water connection with 10-100 psi (0.69-6.9 bar) incoming water pressure
- anti-kink hose protection
- designed for easy maintenance – quick-change pump
- customization options –
 - pump seal material for compatibility
 - color coding – hose
 - foam wand style – zero degree tip or fan tip
 - stainless steel or all-poly fluid fittings

FI-WC – FOAM (pictured)

SP-WC – SPRAY

FISP-WC – dual function FOAM + SPRAY



Wall mounted high concentration units 🇺🇸

- pump provides reliable dilution, regardless of water pressure fluctuations
- powered by compressed air
- dilutes at ratios of 1:1 to 16:1
- requires water connection with 10-100 psi (0.69-6.9 bar) incoming water pressure
- anti-kink hose protection
- all-poly fluid fittings – resistant to many acid products
- designed for easy maintenance – quick-change pump
- customization options –
 - pump seal material for compatibility
 - color coding – hose
 - foam wand style – zero degree tip or fan tip
 - all-poly or stainless steel fluid fittings

FI-WC-11AP – FOAM

FI-WC-11AP2 – FOAM with dual-product pick up (pictured)



Get airborne with our fog & mist units.



10 gallon units

(37.9 liter)

- powered by compressed air
- draws from pre-mixed solution
- run time from full tank:
 - with two nozzles: approx. 1.5 hours
 - with three nozzles: approx. 1 hour
- droplet size: 15 microns at 50 psi (3.4 bar)
- polypropylene and Kynar nozzle construction
- see-through tank
- front-facing drain
- in-line strainer to protect pump
- designed for easy maintenance – modular hinged back plate, quick-change pump
- customization options –
 - pump seal material for compatibility
 - color coding – lid
 - delay timer

FG-10N-2 – FOG / MIST, two nozzles on unit handle

FG-10N-3 – FOG / MIST, three nozzles on telescoping mast





Wall mounted system

- powered by compressed air and electricity
- draws from pre-mixed solution
- control box can supply up to 20 nozzles
- droplet size: 15 microns at 50 psi (3.4 bar)
- polypropylene and Kynar nozzle construction
- delay timer
- quick-change pump
- customization options –
 - pump seal material for compatibility

FOG-IT6 – FOG / MIST control box

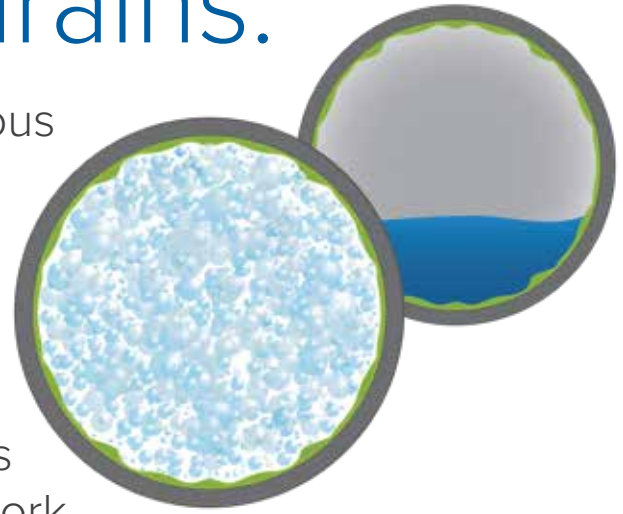
FG-NA-N130 – FOG / MIST nozzle assembly



Don't forget your drains.

Drains can harbor pests, odors, and dangerous pathogens. Unlike liquid cleaners, foam expands inside pipes to contact the entire surface area – for 360° coverage.

Foam pushes through pipes, reaching deep into the plumbing network. Plus, foam breaks down slowly, giving your chemistry time to work.



0.75 inch (19 mm)

- for drains up to 0.75 inches (19 mm) in diameter
- ideal for beverage tower drains, tap lines, etc

F1.5LBK-DP.75 – FOAM unit with 0.75 inch (19 mm) drain plug



3.75 inch (9.5 cm)

- for drains up to 3.75 inches (9.5 cm) in diameter
- ideal for sink drains and overflow areas

F1.5LBK-DP3.75 – FOAM unit with 3.75 inch (9.5 cm) drain cover



5 inch (12.7 cm)

- for drains up to 5 inches (12.7 cm) in diameter
- ergonomic extension wand
- ideal for shower drains, floor drains

F5.0L-DF – FOAM unit with 5 inch (12.7 cm) drain cover

Round / square drains

- drain plug for drains 3.5 to 5 inches (8.9 to 12.7 cm) in diameter
- gasketed cover for larger drains – choose round or square
 - round version – up to 12 inches (30.5 cm) in diameter
 - square version – up to 13 inches (33 cm) square
- compatible with FOAM-iT air or battery powered foam units
- quick-connect fittings – easily switch back and forth between drain foaming attachment and regular foam wand

DFA – drain foaming attachment, round cover (pictured)

DFA-SQ13 – drain foaming attachment, square cover



Trench drains

- 7 inch (17.8 cm) round, flat brush head
- pushes foam through drain grate to fill trench and contact all interior surfaces
- compatible with FOAM-iT air or battery powered foam units
- quick-connect fittings – easily switch back and forth between drain foaming attachment and regular foam wand

DFA-TR7 – trench drain foaming attachment (pictured)



Use with our [battery foam units](#) and move from drain to drain without the hassle of air lines – see p. 19.



Defend your doorways.

Doorways and transition zones can be entry points for pathogens. Prevent cross contamination by sanitizing foot and vehicle traffic with our doorway foam units.



Doorway foam units

- pump provides reliable dilution, regardless of water pressure fluctuations
- powered by compressed air
- draws from concentrated product
- dilutes at ratios of 38:1 to 183:1
- repeat cycle timer
- each control box can support up to three stainless steel nozzle assemblies
- nozzle fan tip size & coverage area will vary based on total number of nozzles
- up to 100 feet (30.5 meters) total distance between control box and nozzle(s)
- designed for easy maintenance – quick-change pump
- customization options –
 - pump seal material for compatibility

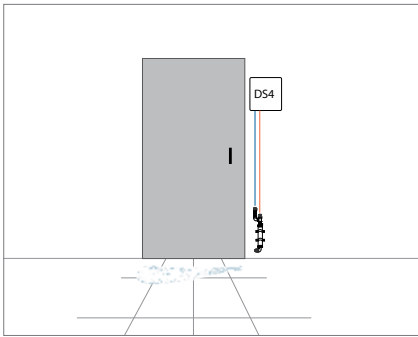
DS4 – FOAM, one nozzle assembly

DS4-2 – FOAM, two nozzle assemblies (pictured)

DS4-3 – FOAM, three nozzle assemblies

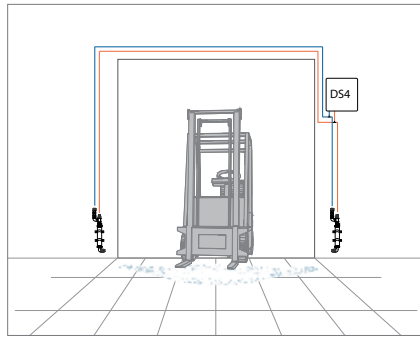
We also offer doorway foam drop stations for central systems – see p. 14-15.





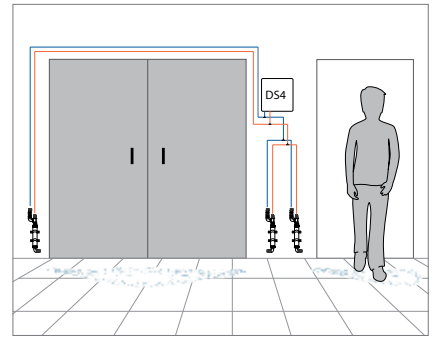
One nozzle

- coverage area – up to 9 x 5 ft. (2.7 x 1.5 m)



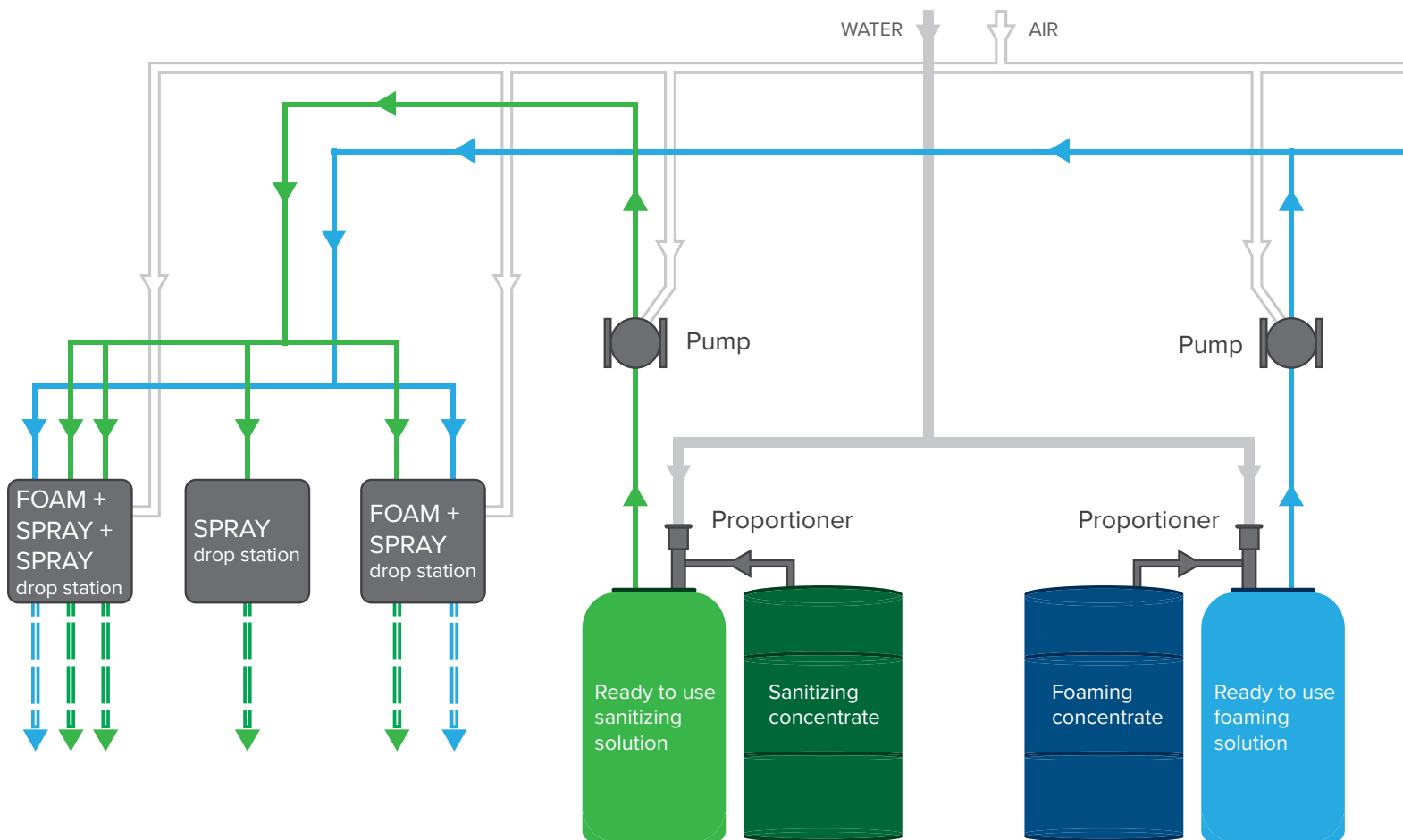
Two nozzles

- coverage area – up to 8 x 4 ft. (2.4 x 1.2 m) at each nozzle



Three nozzles

- coverage area – up to 6 x 3 ft. (1.8 x 0.9 m) at each nozzle



Proportioners

- turn concentrated chemical into ready-to-use solution
- different tank sizes and flow rates available

Pumps

- distribute solution to drop stations throughout your facility
- choose size and seal type based on usage and chemistry

Foam / spray drop stations

- mix and match up to three separate functions per drop station – foam/spray, foam/foam, foam/spray/spray, etc.
- each function requires pre-mixed solution supplied by a properly sized header system
- foam functions require compressed air
- foam functions have wet/dry foam needle valve and solution volume control valve to dial in foam quality
- customization options –
 - color coding – hose

FI-STATION – FOAM

FI-STSAN – dual function FOAM + SPRAY

FI-STSANSAN – triple function FOAM + SPRAY + SPRAY

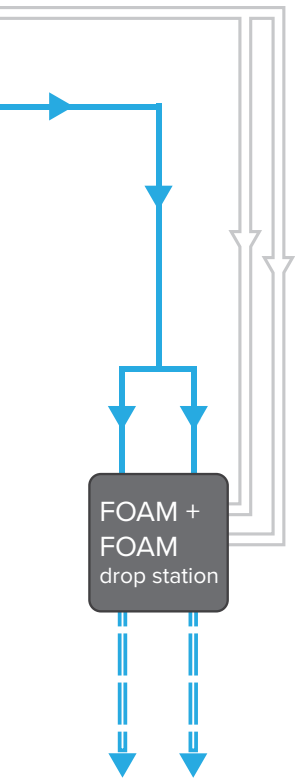
Doorway foam drop stations

- each doorway drop station supports multiple nozzles
- requires pre-mixed solution supplied by a properly sized header system
- requires compressed air
- wet/dry foam needle valve and solution volume control valve to dial in foam quality
- repeat cycle timer – control on/off time independently at each drop station
- customization options –
 - operating voltage – 120 VAC or 24 VAC

GK5T – DOORWAY FOAM drop station

GK7T – DOORWAY FOAM nozzle assembly

Consolidate your chemical supply with central systems.



Reduce complexity while saving labor and time. Central systems deliver ready-to-use solution throughout your facility, with only one place to titrate.

Our systems are highly customizable – mix and match drop station functions to get exactly what you need, where you need it.

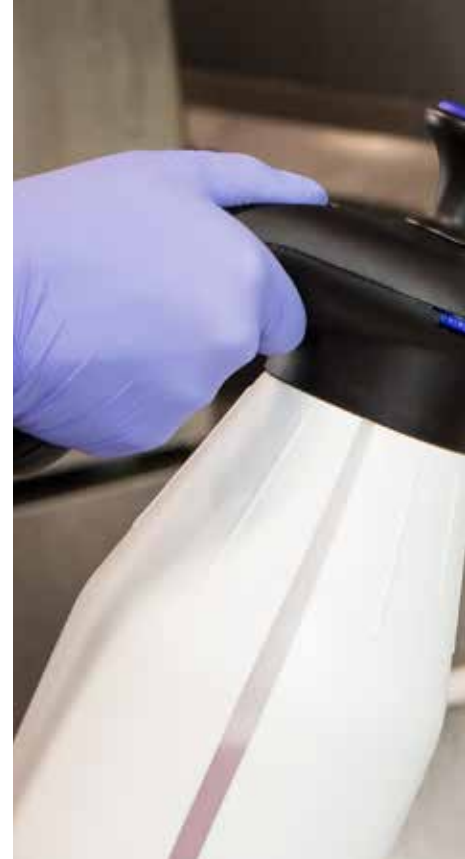
Each central system is unique, designed for each facility's layout and needs. Our tech experts can help you design a customized system for any facility, large or small.



Make short work of small spaces.

Our manual pump-up units are ideal for spot cleaning and other small projects, especially in areas without ready access to compressed air. Try them in situations where you might normally reach for a trigger spray bottle, or something a little larger.

Available in foam or spray versions, with three sizes to choose from.



0.4 gallon (1.5 liter)

- view stripe – level markings in gallons and liters
- stability base
- ergonomic thumb trigger
- gripping notches for easy opening
- Viton seals for compatibility
- pressure relief valve for safety

Additional features for SPRAY version only:

- adjustable nozzle – twist to change from stream to spray
- sprays at any angle, even upside down

F1.5L – FOAM, white tank
F1.5LBK – FOAM, black tank

SP1.5L – SPRAY, white tank
SP1.5LBK – SPRAY, black tank





A great alternative to trigger sprayers.

Try using our 0.4 gallon units instead of a trigger spray bottle.

Choose a SPRAY unit and spray at any angle, even upside down. Plus, twist the adjustable nozzle to change from stream to spray.

Or, choose a FOAM unit for long dwell times and visual confirmation of coverage.

1.3 & 2.6 gallon (5 & 10 liter)

- see-through tank
- stability base
- Viton seals for compatibility
- pressure relief valve for safety
- customization options –
 - choose extendable wand or heavy duty trigger handle

1.3 gallon (5 liter)

F5.0L – FOAM, extendable wand (pictured)
F5.0L-PSG – FOAM, heavy duty trigger handle
SP5.0L – SPRAY, extendable wand
SP5.0L-PSG – SPRAY, heavy duty trigger handle

2.6 gallon (10 liter)

F10.0L – FOAM, extendable wand
F10.0L-PSG – FOAM, heavy duty trigger handle (pictured)
SP10.0L – SPRAY, extendable wand
SP10.0L-PSG – SPRAY, heavy duty trigger handle



Branch out with our battery & dual-power units.

Extend your reach to areas without compressed air. These units can handle larger jobs than a pump up, without tethering you to an air line.

Plus, their lower volume output makes them ideal for jobs where an air-operated unit produces too much foam.



2.6 gallon dual-power unit (10 liter)

- the convenience & performance of air power, with the portability of a pump-up unit
- dual-power – pressurize using compressed air or manual pump
- run connected to air line, or pressurize then disconnect to use
- air-assisted foam quality / spray pressure
- see-through tank with level markings
- 6 ft. (1.8 m) hybrid thermoplastic hose
- Viton seals for compatibility
- pressure regulator & relief valve for safety

F100 – FOAM
SP100 – SPRAY



10 gallon battery unit

(37.9 liter)

- battery-powered – no air lines or power cords to manage
- built in air compressor – high-quality air-assisted foam
- draws from pre-mixed solution
- produces a lower volume of foam than our air-operated units
- up to 45 minutes of continuous run time per charge
- external battery enclosure makes it easy to swap in a fresh battery and keep working
- see-through tank with front facing drain
- in-line strainer to protect pump
- customization options –
 - pump seal material for compatibility
 - color coding – hose +/- or lid
 - foam wand style – trigger handle or ball valve (ball valve is recommended if you plan to use our drain foaming attachments)

FI-10N-B – FOAM, trigger handle

FI-10N-B-SSBV – FOAM, ball valve (pictured)

SP-10N-B – SPRAY

15 gallon battery unit

(56.8 liter)

- optimized for use with low-foaming chemical products
- battery-powered – no air lines or power cords to manage
- built in air compressor – high-quality air-assisted foam
- draws from pre-mixed solution
- produces a lower volume of foam than our air-operated units
- up to 2 hours of non-continuous run time per charge
- battery charge indicator
- see-through tank with side drain
- in-line strainer to protect pump
- customization options –
 - pump seal material for compatibility
 - color coding – hose +/- or lid

FI-BP-15N – FOAM (pictured)

SP-BP-15N – SPRAY



Great for use with our [drain foaming attachments](#) – see p. 11.



Stop pathogens in their tracks.



Footwear sanitation system

- low-moisture system – ideal for dry plants, moisture-controlled environments, and similar areas
- delivers a consistent amount of sanitizer (0.2 oz / 5.9 mL) per spray
- spray pattern ensures even coverage across shoe sole
- collection basin is easy to empty and clean
- includes 2.5 gallon (9.5 liter) chemical jug with closed-loop quick-connect suction fittings
- powered by compressed air
- draws from pre-mixed solution
- durable stainless steel frame and polyethylene body
- available in three different configurations

SS2 – footwear sanitizing unit

SS2-FMH – footwear sanitizing unit with handle

SS2-MBS – footwear sanitizing unit with boot scrubber



Organize with racks & stands.

Wipe stand



- keep cleaning wipes close by
- holds two wipe containers – one up top, with storage for a spare below
- fits standard 5 x 9 in. containers or others at least 6.5 in. (16.5 cm) tall with diameters up to 5 in. (12.7 cm)
- stand height is 32.5 in. (0.83 m)
- stainless steel construction with electropolished finish
- may be floor mounted (mounting hardware not included)
- easy to clean

CSTAND5X9 – wipe stand



Slide-out stand

- slides forward and back like a drawer on most hard surfaces
- keeps container off the floor – allows visibility and airflow underneath
- low profile – only adds 3.25 in. (8.3 cm) to container height
- durable HDPE construction
- holds containers with footprint up to 12 in. (30 cm) square
- easy to disassemble for thorough cleaning – snap-together design uses no fasteners

CMS12X12 – slide out stand



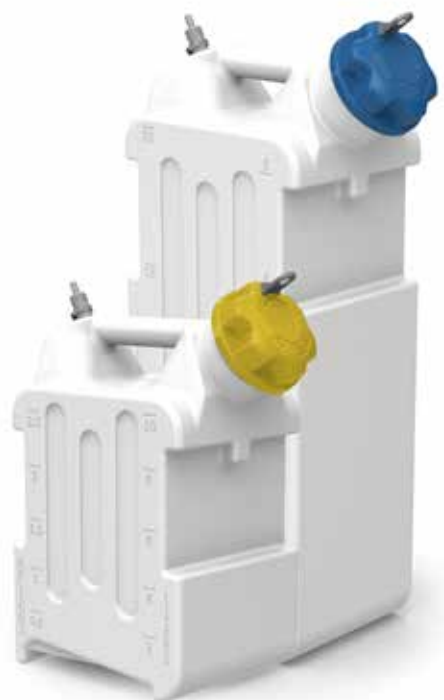
Lockable rack

- holds two standard 1-gallon jugs
- security bar accepts padlock
- cutouts for label visibility
- holes to attach chemical tags
- stainless steel construction
- drainage holes in underside of rack
- mounts to wall (includes mounting hardware)
- easy to clean

LI2X1 – lockable rack



Secure, store, and transfer chemicals.



Chemical jugs with locking caps 🇺🇸

- durable, reusable polyethylene jug is built to last
- see-through jug body with level markings in gallons and liters
- includes our locking cap with NPS threads – see features below
- optional stainless steel rack, designed for easy cleaning
- optional integrated suction fittings for 1/4 in. I.D. hose, with draw tube for chemical pickup
- jug body is not compatible with locking cap with buttress threads or with non-locking chemical jug cap
- customization options –
 - color coding – cap
 - size – 2.5 or 5 gallon (9.5 or 18.9 liters)
 - optional stainless steel rack
 - optional integrated suction fittings

J2.5LIYLS – 2.5 gallon jug with yellow locking cap, suction fittings (pictured)

J5LIBLS – 5 gallon jug with blue locking cap, suction fittings (pictured)

Locking caps 🇺🇸

- durable, corrosion-resistant polypropylene, polyethylene, and stainless steel construction
- tamper-resistant – designed to withstand attempts to force open with other tools
- metal-detectable universal key with hole for lanyard or keychain
- optional fitting for suction line – maintain security while accessing chemical
- available in 2 in. male NPS or 2 in. male buttress thread
- customization options –
 - color coding
 - thread type – NPS or buttress
 - optional suction line fitting

LI-BT – locking cap, buttress thread, white

LI-FT – locking cap, NPS thread, white

LI-FTS-YL – locking cap, NPS thread, suction fitting, yellow





Chemical transfer unit for up to 4 products

- transfer each product at up to 3.5 gal/min (13.2 l/min)
- tool-free pump changes with our quick-change pump bracket
- transparent, chemically-resistant PVC hose
- weighted suction line with filter and check valve
- air regulator with filter
- strain relief on the discharge hose
- trigger gun with Hastelloy components for compatibility
- air-operated diaphragm pump with quick-release hose barbs
- customization options –
 - number of pumps
 - pump seal material for compatibility
 - color coding

CTX – chemical transfer unit for up to 4 products



Non-locking chemical jugs

- durable, reusable polyethylene jug is built to last
- see-through jug body with level markings in gallons and liters
- retention chain to prevent lost or mismatched jug caps
- optional stainless steel rack, designed for easy cleaning
- optional integrated suction fittings for 1/4 in. I.D. hose, with draw tube for chemical pickup
- one-way vent included on jugs with suction fittings to prevent vapors and leaks
- jug body is not compatible with locking cap
- customization options –
 - color coding – cap +/- or jug body
 - size – 2.5 or 5 gallon (9.5 or 18.9 liters)
 - optional stainless steel rack
 - optional integrated suction fittings

J2.5BKSR – 2.5 gallon jug with suction fittings, rack (pictured)

J5BKS – 5 gallon jug with suction fittings (pictured)





FOAM-iT

CHEMICAL MANAGEMENT & APPLICATION EQUIPMENT

info@lighthouselifesciences.com

1 (800) 298-5433



LIGHTHOUSE
Life Sciences

V20210319